

THE
1896

THE1896.COM

STAGE ENTRANCE

215 Ingraham Street (A2 & A3)

211 Ingraham Street (A4 & A5)

Brooklyn NY 11237

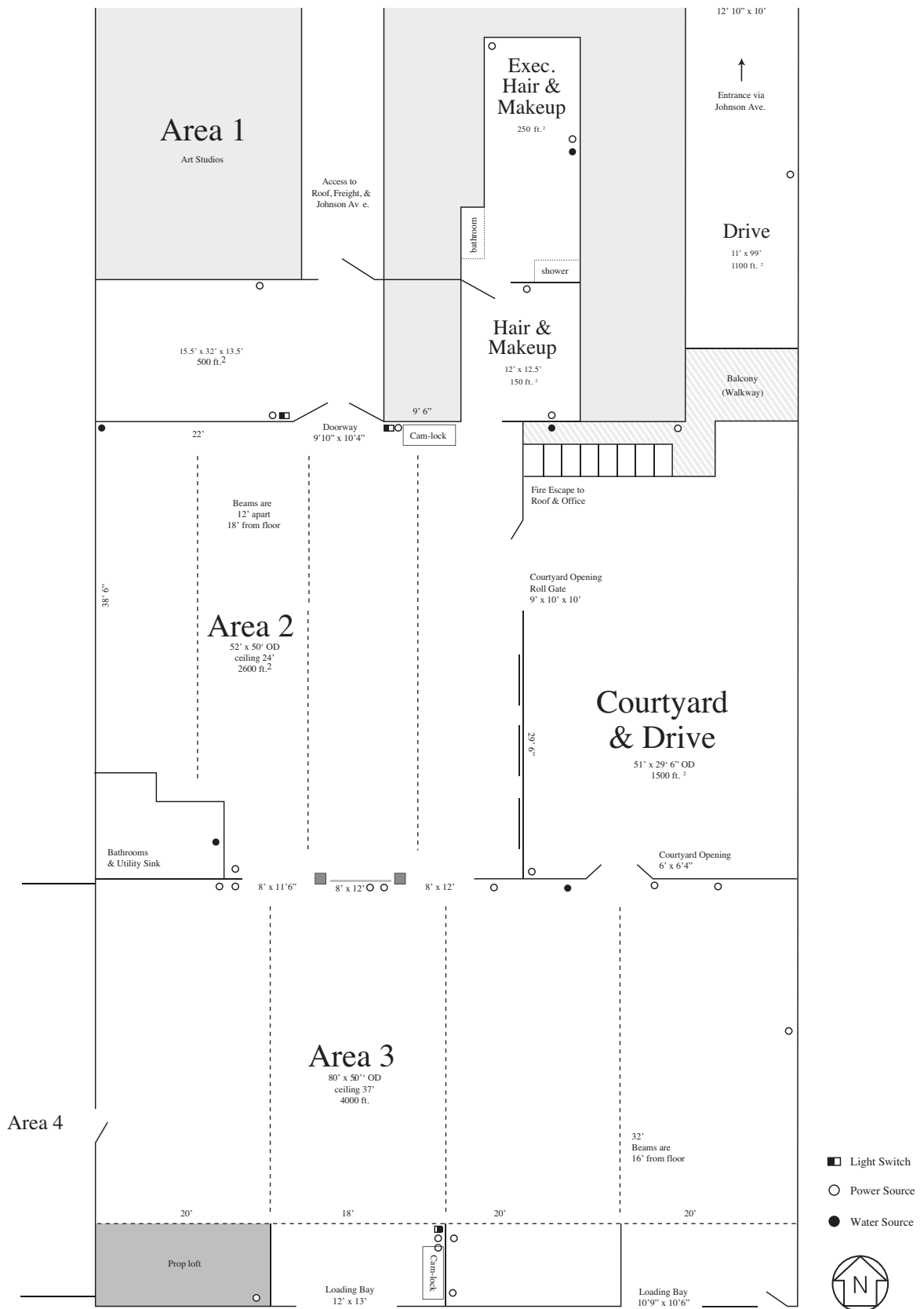
MAILING ADDRESS & ART STUDIO ENTRANCE

592 Johnson Avenue

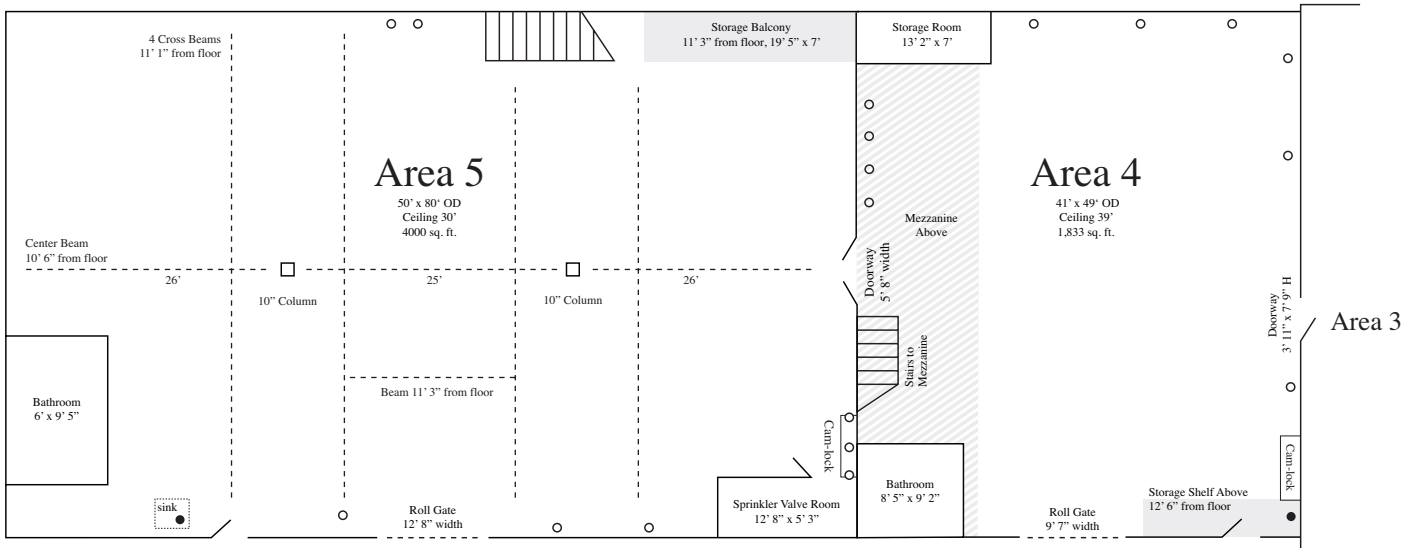
Brooklyn NY 11237

T 718.451.6531

E the1896@gmail.com



Stage entrance: 215 Ingraham



Ingraham Street

○ Power Source

● Water Source



AREA 3

- 4,000 sq. ft. [Approx. 78' w x 48' inner dimensions]
- Ceiling Height: 37' (30' steel-girder ceiling, with 7' skylights)
- Load-bearing Beams: 16' from floor, 18' – 20' apart
- Ground Level/ Drive In
- 2 Loading bays: 11' x 12'h and 13' x 15'h
- Block-able Skylights (see FAQ)
- Connects to 2600 sq. ft. Courtyard and Drive, and 2600 sq. ft. Area 2
- Fully Heated/ Vented
- Suitable for flooding - water source on stage
- Suitable for pyrotechnics (concrete/brick construction)
- 300 amp Cam-lok, two separate 30 amp lines and outlets throughout. Additional 300 amp Cam-lok in Area 2 (see FAQ)
- On-site distro package available for rent – please check with staff regarding availability prior to shoot

AREA 2

- 2,600 sq. ft. [Approx. 50' x 48' inner dimensions]
- Ceiling Height: 24' floor to A-Frame ceiling
- Load-bearing Beams: 18' from floor, 12' apart
- Ground Level/Drive In (through Courtyard or A3)
- Loading Bay to Courtyard (8' x 10' h) - manual
- Accessible via AREA 3 loading bays
- Quick and easily Block-able Skylights
- Connects to 2600 sq. ft. Courtyard and Drive, and 4000 sq. ft. Area 3
- Connects to Hair & Make-up Room, Executive Hair & Make-up Room
- Fully Heated/ Vented
- Suitable for flooding - water source on stage
- Suitable for pyrotechnics (concrete/brick construction)
- 300 amp Cam-lok and outlets throughout. Additional 300 amp Cam-lok in Area 3 (see FAQ)
- On-site distro package available for rent – please check with staff regarding availability prior to shoot

AREA 4

- 2,000 sq. ft. [Approx. 39' x 47' inner dimensions]/ 500 sq. ft. Mezzanine
- Ceiling Height: 37' floor to peak
- Ground Level/Drive In
- Loading Bay to Ingraham St.
- Easy Black Out: No Skylights
- Connects to 4000 sq. ft. Area 5 and 4000 sq. ft. Area 3
- Mezzanine / Balcony / Client Loft
- Hair and Make Up Area
- Fully Heated
- Suitable for flooding - water source on stage
- 300 amp Cam-lok and outlets throughout. Additional 300 amp Cam-lok in adjoining Area 5 and Area 3 (see FAQ)
- On-site distro package available for rent – please check with staff regarding availability prior to shoot
- Modular and Moveable corner CYC (coming soon)

AREA 5

- 4000 sq. ft. [Approx. 78' w x 48' inner dimensions]
- Ceiling Height: 30'
- Load-bearing Beams
- Ground Level/ Drive In
- Loading bay to Ingraham St.
- Block-able Skylights (see FAQ)
- Connects to 2000 sq. ft. Area 4
- Fully Heated
- Pipe and Drape Mobile Vanity Setup
- Suitable for flooding - water source on stage
- Suitable for pyrotechnics (concrete/ brick construction)
- 300 amp Cam-lok, outlets throughout. Additional 300 amp Cam-lok in Area 4 (see FAQ)
- On-site distro package available for rent – please check with staff regarding availability prior to shoot

COURTYARD AND DRIVE

- 1500 sq. ft. Courtyard/ 1100 sq. ft. Drive
[30'w x 51'l / 11'w x 99'l]
- Drive opens to Johnson Avenue
(via loading bay 10' x 10.5' h)
- Enclosed Drive-in Courtyard - 100% private
- Water Source
- Fire Escape/ Balcony

HMU

- 150 sq. ft.
- Beauty Bar with Vanity Stools
- Adjustable Lighting
- Heat and A/C

EXECUTIVE HMU

- 250 sq. ft.
- Private Vanity/ Bathroom/ Sink/ Shower
- Adjustable Lighting
- Heat and A/C

FLEX SPACE

- 500 sq foot
- Ceiling Height: 13.5'
- Concrete and Brick Private Room
- Available for production/green room/
wardrobe/set builds/break-out rooms
- Available by the hour or day/week.
- Set up for Seamless

ROOF

- Large 8,000 sq. ft. roof
- Northern view of Manhattan
- Southern view of our Smokestack and
Enclosed Courtyard
- Load in via Johnson Ave.
- Rustic/ Brick Stairwell

FREIGHT ELEVATOR

- Opens to Johnson Ave on 1st floor
- Size: 5'7" x 11' x 7'8"
- Natural Light from above
- Fully inspected

TWO STAIRWELLS

- Rustic/ Brick Stairwell with Skylight
- Marble/ Finished Stairwell

LOFT APARTMENT

- 1500 sq. ft.
- Sunny private/ window-lined two-bedroom
lofted apartment available for shoots
- 2 Bedrooms, Studio/ Library, Living Room,
Kitchen, Full Bathroom
- Garden Patio

ART STUDIOS (AREA 1)

- 30 artist studios, from 135 sq. ft. -1500 sq. ft.
- Ceiling Height: 12'-14'
- White Plaster walls/ Wood or Concrete floors
- Many with Natural Light/ Windows
- Available for yearly leases
- Empty Artist Studios available for shooting on occasion
(inquire for sizes and availability)
- Operating as furnished artist studios available for shoots
(at artist's discretion)
- Art Rentals Available (Painting, Sculpture, Drawing,
Photo, Print)